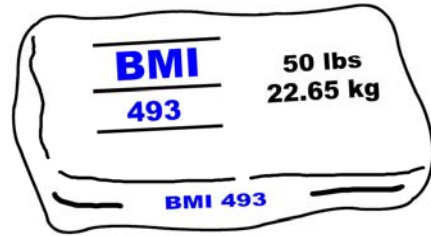




# BMI 493 Gypsum Cement Floor



### Product Description:

BMI 493 is a Gypsum Cement, self leveling floor underlayment. This product improves the sound and fire resistance of any floor. BMI 493 is dry pre blended in the factory, and it contains all ingredients, including sand.

### Mixing:

The product is mixed in a big bucket with a drill, or with the m-tec D-20 continuous mixer as well as the fully automatic mixing pump. The product should be mixed at a rate of 1 gallon of water to 50 lbs. of product. Do not add too much water.

### Application:

Prior to installation of the BMI 493, the height of the floor needs to be marked along the wall and every 20 ft on the floor. On the floor a screw is set to the height of the finished floor, along the wall markings are sufficient. The entire floor has to be done in one pour, to achieve a perfectly level floor. For larger projects use the automatic silo mixing pump. Level the BMI 493 with a broom or a small push rod.

### Manufacturer:

**BMI Products of Northern Illinois, Inc.**  
28919 West Route 173  
Antioch, IL 60002-9115  
Phone: (847) 395-7110  
Fax: (847) 395-7105  
Local: (888) SILOMIX  
Web Site: [www.bmi-products.com](http://www.bmi-products.com)

### Coverage:

One 50 lbs bag of BMI yields 0.5 cu. ft. of wet product or 6 sq. ft. of floor at 1/2" thick. One ton of BMI 493 yields 20 cu. ft. or 240 sq. ft. at 1/2" thick.

### Specifications:

BMI 493 Gypsum Cement Floor :

#### Compressive Strength ASTM C 109

Test Results:	7 days	28 days
Flow: 10"	1768	2955
	1695	2946
	1723	3052

#### Shrinkage/ Expansion ASTM C 157:

24 Hours	0.015%
3 Days	0.017%
7 Days	0.017%
14 Days	0.019%
28 Days	0.017%

#### Flexural Strength ASTM C 78:

7 Days	28 Days
265	943
290	902
273	910

#### Scaling Resistance:

30 days	none
---------	------

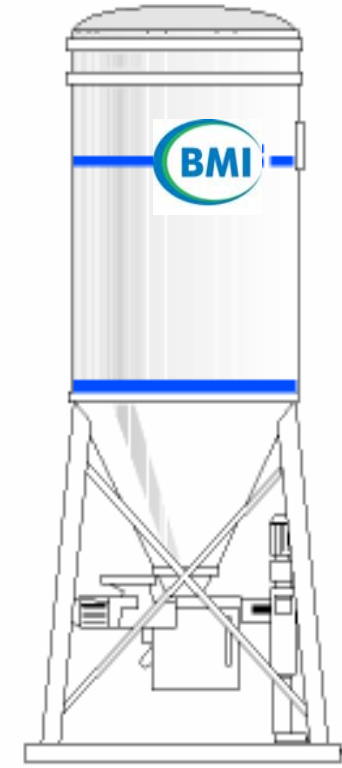


# 493

BMI 493 is a Gypsum Cement self leveling floor underlayment system.

The first system that combines material and equipment.

BMI 493 is the only system that assures a consistent quality product on every job.



## Self Leveling Gypsum Cement Floor

# BMI Products of Northern Illinois, Inc.



# BMI Gypsum Cement

# 493 Underlayment



## Product Description:

BMI 493 is a specially formulated Gypsum Cement, self leveling floor underlayment.

BMI 493 is a factory blended product that contains all the necessary components, only water needs to be added.

The BMI underlayment is installed by factory trained licensed applicators with the specially designed silo mixing pump.

This revolutionary system of a silo mixing pump includes the delivery, storage, mixing and pumping of the product in one single unit.

This unique combination of product and fully automatic mixing pump assures the quality of the product on every job.

BMI 493 can be installed to a depth of 1/2" to 1 1/2" over precast or cast in place concrete floors, wood sub floors and floor heating systems.



## Installation:



Prior to the start of the installation the consistency is set to the factory recommended flow.



The product is then pumped automatically into the building at the recommended thickness.



Some light movements with push rod will remove air and leave the floor perfectly smooth and level.

## Construction Details:

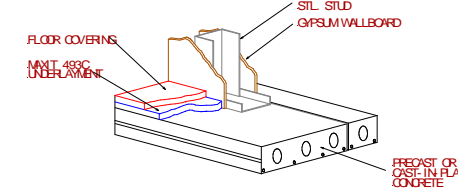


FIGURE 1 : CONCRETE SYSTEMS

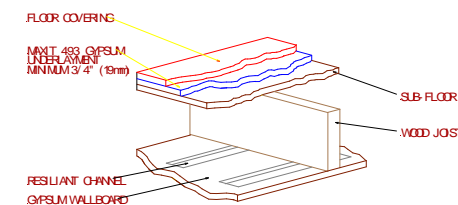


FIGURE 2 : WOOD SYSTEMS

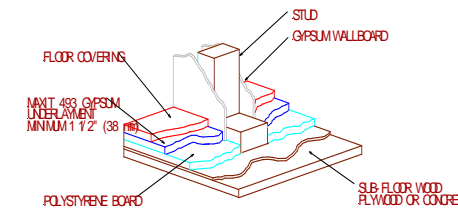


FIGURE 3 : POLYSTYRENE SYSTEMS

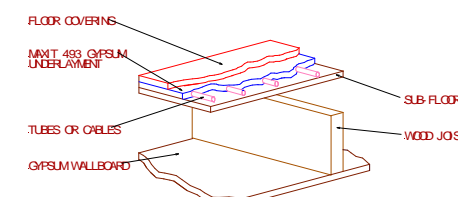


FIGURE 4 : RADIANT SYSTEMS

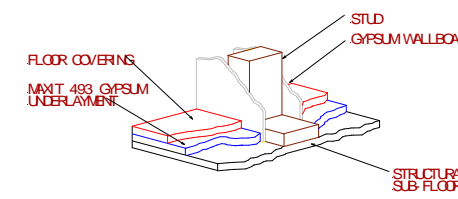


FIGURE 5 : RENOVATION

## Product use:

BMI 493 is a Gypsum Cement Underlayment for use over many different floor substrates.

There are many beneficial reasons for using BMI 493 in floor construction.

First - It creates a smooth even surface to be able to lay down different floor coverings such as carpet, vinyl, wood or tile.

Secondly - It improves the sound properties of the floor.

Thirdly - BMI 493 greatly improves the fire resistance of the floor.

BMI 493 is used in:

- Residential Construction
- Commercial Construction
- Renovation
- Covering floor heating systems
- And many different uses

